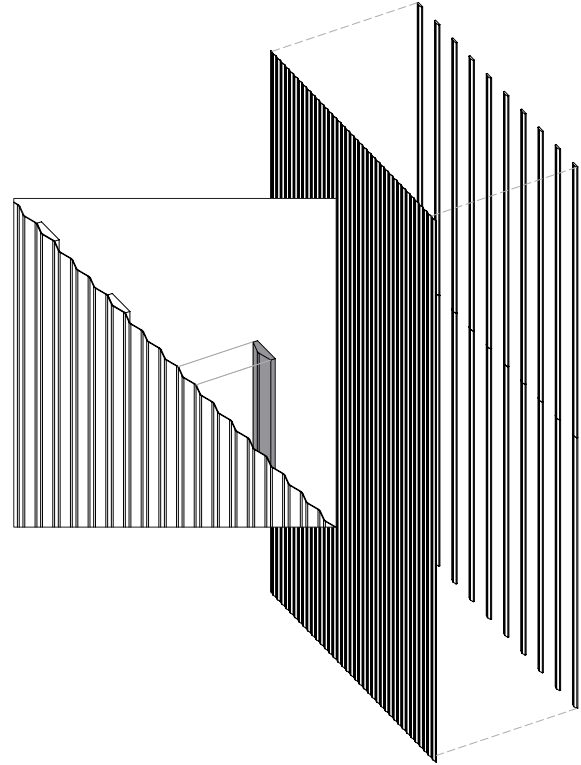


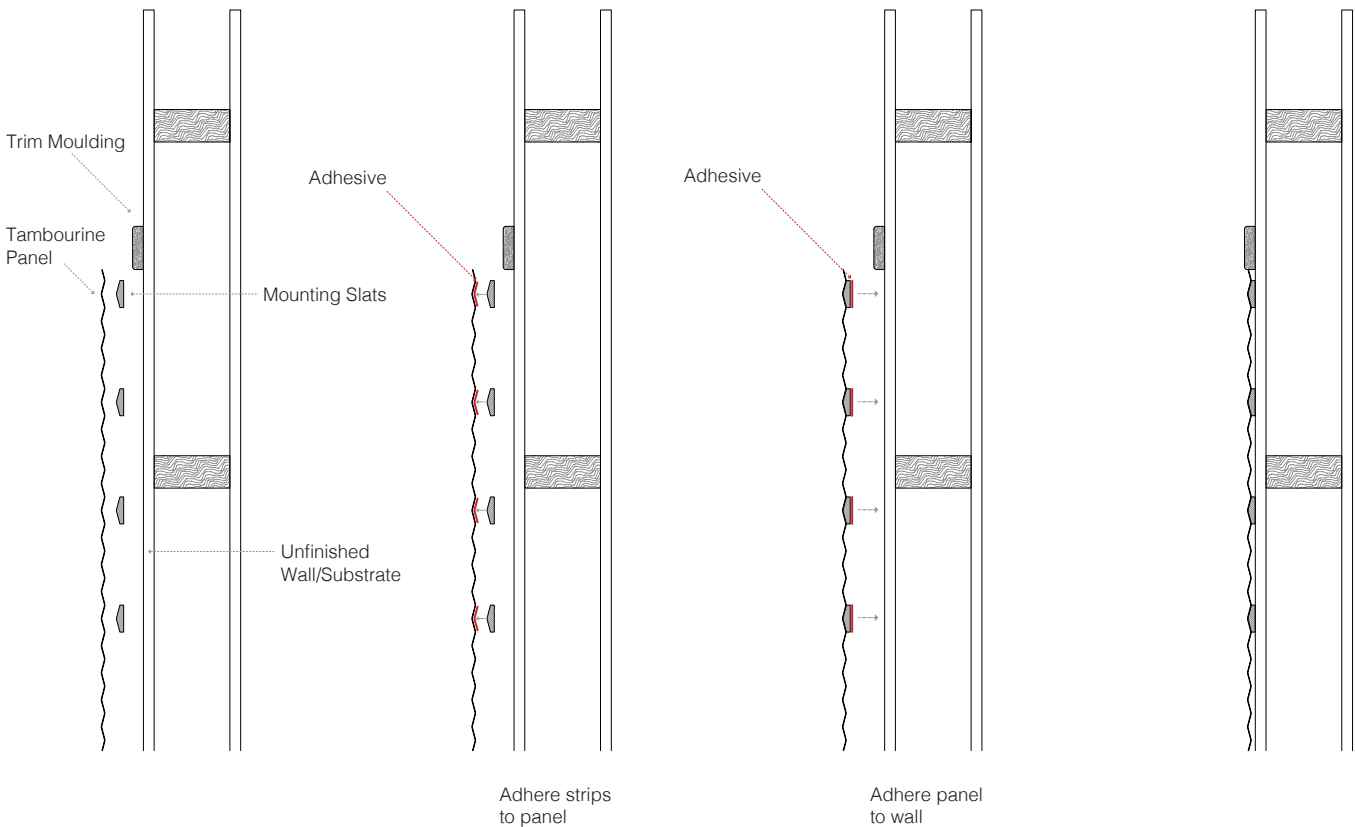
### Tambourine Installation

When installing Tambourine as wall cladding the deep embossed relief needs to be supported by slats attached to the back of panel.

1. Position backer slats evenly on back of panel
2. Adhere to panel using VHB tape or construction adhesive
3. Apply adhesive to back side of slats, position panel and press onto wall.
  - a. Wall/substrate should be unfinished for permanent adhesion.

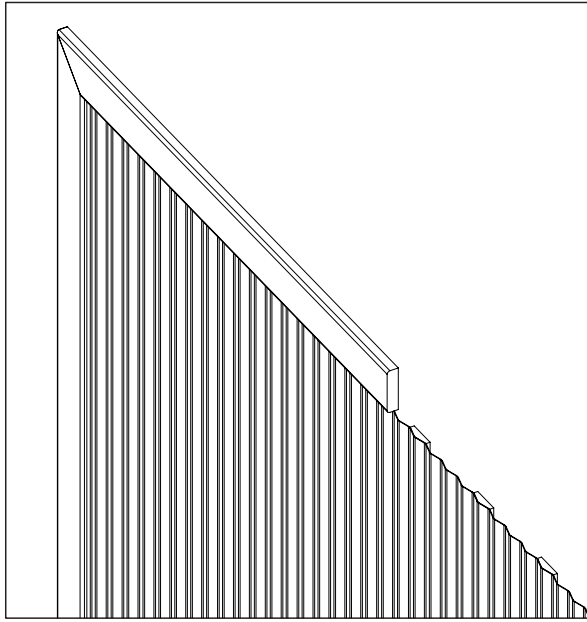


### Cross Section

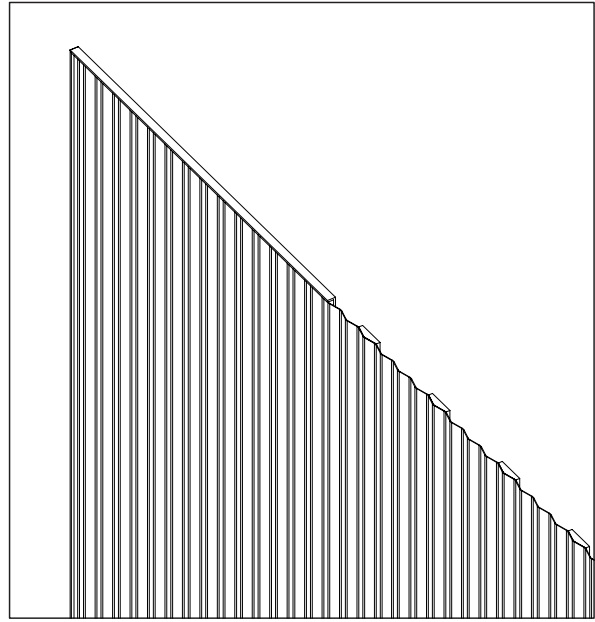


### Edge Trim

Edges of panel should be covered by trim piece for clean installation.



a. Typical wood trim



b. Metal angle trim

### Multiple Panels

When butting panels together a metal angle trim piece can be used to create a clean transition.

a. Alternatively, adjacent panels can overlap where they meet.

